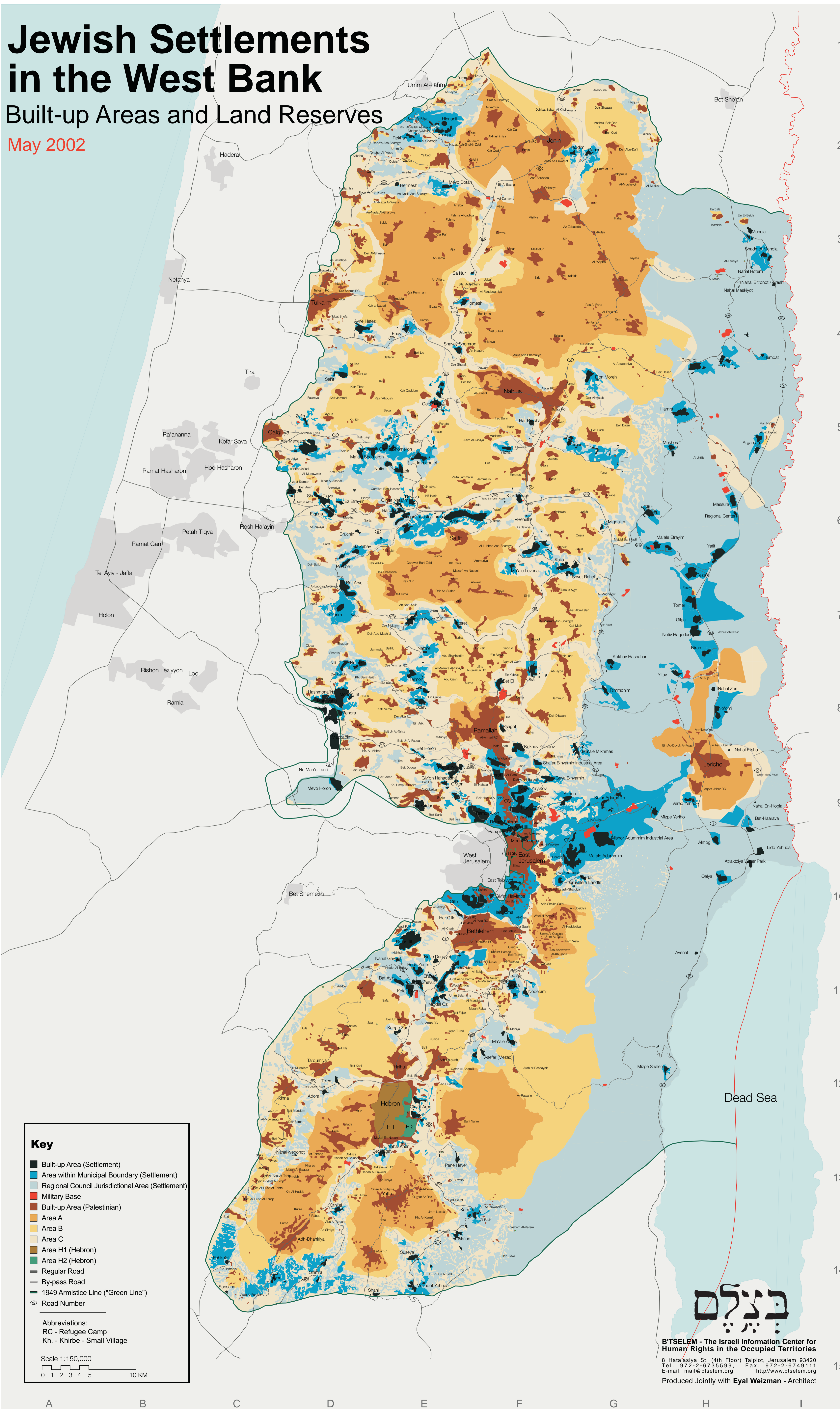


Jewish Settlements in the West Bank

Built-up Areas and Land Reserves

May 2002



Key

- Built-up Area (Settlement)
- Area within Municipal Boundary (Settlement)
- Regional Council Jurisdictional Area (Settlement)
- Military Base
- Built-up Area (Palestinian)
- Area A
- Area B
- Area C
- Area H1 (Hebron)
- Area H2 (Hebron)
- Regular Road
- By-pass Road
- 1949 Armistice Line ("Green Line")
- ⊙ Road Number

Abbreviations:
 RC - Refugee Camp
 Kh. - Khirbe - Small Village

Scale 1:150,000

0 1 2 3 4 5 10 KM

בִּתְּסֵלֵם

B'TSELEM - The Israeli Information Center for Human Rights in the Occupied Territories
 8 Hata'asiya St. (4th Floor) Talpote, Jerusalem 93420
 Tel.: 972-2-6735599, Fax.: 972-2-6749111
 E-mail: mail@btslem.org http://www.btslem.org
 Produced Jointly with Eyal Weizman - Architect